



Assembly Instruction

Item Code-Laurent(10094)

Imported By JCI Global

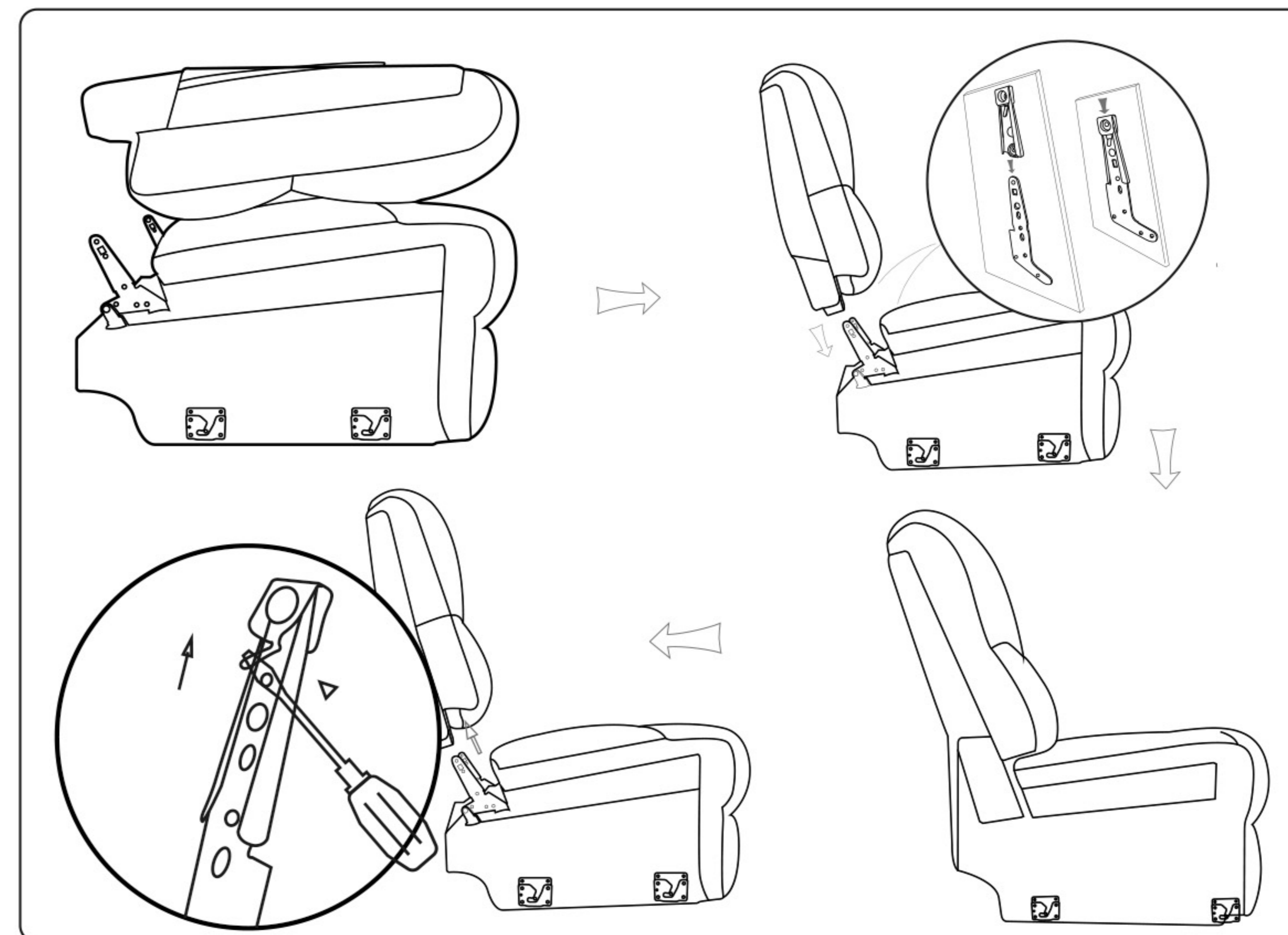
Building 3 west,605 Zillmere Rd.Aspley QLD 4035

BEFORE YOU START...

- 1.Chose a clean, level, spacious assembly area. Avoid hard surface that may damage the product.
- 2.Check and ensure that you have all required contents for complete assembly.
- 3Always read the assembly instructions carefully before beginning assembly.
- 4.The packaging and contents can be choking hazard, therefore keep out of reach of small children at all the times.

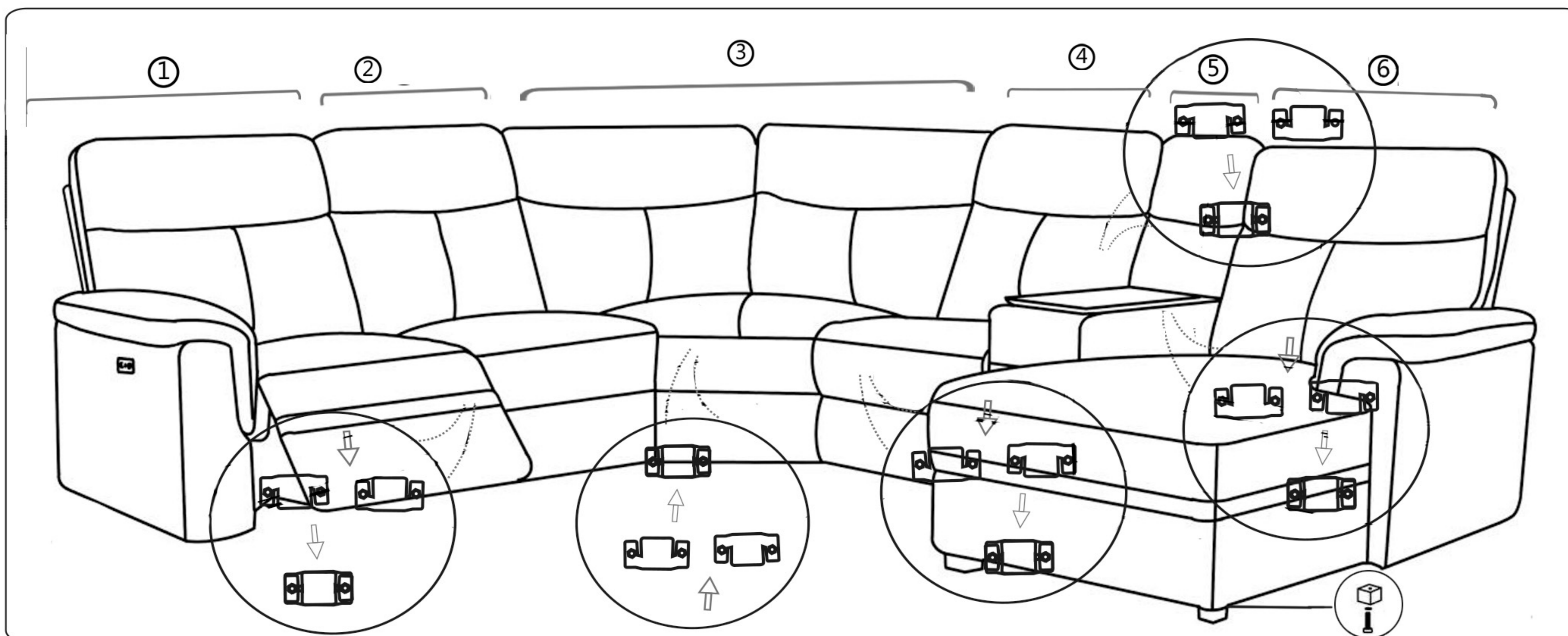
Backrest Assemble

1. Remove the bags from Seat and Back.
2. Hold back and flap with both hands and line male and female brackets together .Apply down ward force to top of back (one side at a time) to ensure snap engagement
3. Attach Velcro back flap starting in the middle and working towards outside, pulling flap tight.
4. Above steps should be available for all the backrest in the item



Power packs

A		Transformer	1PC
B		Power Line	1PC
C		MDF Wooden foot	2PCS
D		Screw	2PCS
E		Plain washer	2PCS



Sectional Assemble

- 1.Lift the side with downward hook, let it slide into the upward hook, from 1-2-3-4-5-6-7, one by one.
- 2.Assembly Finished.

This appliance is not intended for use by persons (including children) with reduced physical, sensory or mental capabilities, or lack of experience and knowledge, unless they have been given supervision or instruction concerning the use of the appliance by a person responsible for their safety. Children should be supervised to ensure that they do not play with the appliance.