

ASSEMBLY INSTRUCTIONS

KF.2701C Chicago/Mayfair

⚠ CAUTION: Do not attempt to assemble or lift this product with only one person. Please use two people for your safety.



PRODUCT CARE

Protect from direct sunlight, direct heat and weather.

Covers will fade over time.

Do not remove covers for cleaning.

Blot food and liquid spills immediately with a dry, white, clean cloth. Do not rub.

Fabric product: Vacuum regularly using low suction.
If further cleaning is required, use a mild non-coloured pure soap solution made from soap flakes mixed with warm water.

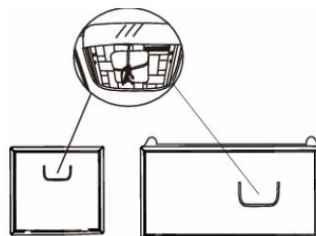
Leather product: Vacuum regularly with a soft brush attachment.

Wipe clean with a damp colour-fast cloth.

Use only leather care products suitable semi-aniline leather and strictly in accordance with the manufacturer's instructions.

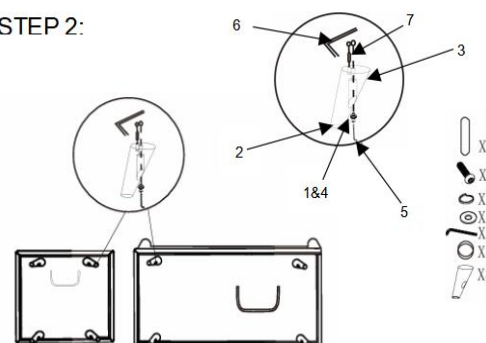
HARDWARE LIST-Armchair and 2S			
ITEM	DESCRIPTION	QTY-Armchair	QTY-2S
1	spring washer	4 PCS	4 PCS
2	cotton pad	4 PCS	4 PCS
3	side leg	4 PCS	4 PCS
4	zincd spacer	4 PCS	4 PCS
5	screw	4 PCS	4 PCS
6	Allen key	1 PC	1 PC
7	dowel	4 PCS	4 PCS

STEP 1:

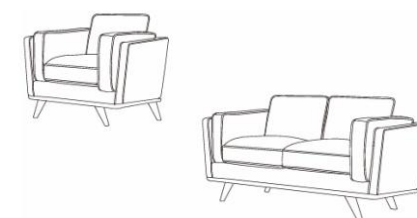


Unzip pocket and remove legs and hardware pack.

STEP 2:



Tighten legs to 80% to start by ALLEN KEY according to the below photo. When all parts have been assembled, you may fully tighten the hardware. To prevent damage to screw threads, do not use a power tool and do not



Using two people, gently flip over the sofa. It is important that you do NOT roll the sofa onto the legs as this will weaken the structure. Connect the two pieces together using the attached